

SIGNAL ASPECTS LTD

Solid State Treadles

These 'treadles' (actually inductive sensors) are clamped to the rail and detect the passage of train wheel flanges. They can be used on all track gauges from standard gauge to 15" gauge.



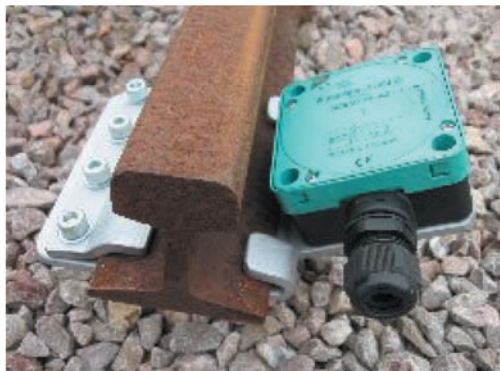
Features

- Solid state – no depression lever or other moving parts
- Very long service life
- No maintenance required
- Supply voltage 24V DC
- One set of normally open and one set of normally closed contacts

Operation

Each passing wheel flange is detected, so the output comprises a series of pulses. These can be used to activate a timer interface to give a 'solid' output that will pick, or drop, a relay. Axle counters for narrow gauge!!!

Supply includes mounting bracket and interface. Please contact Signal Aspects Ltd to discuss your requirement.



Sensor specification

Dimensions:	83mm x 83mm x 40.5mm
Operating voltage:	10-60V DC
Operating current:	200mA
Off state current:	0-0.5mA
No load supply current:	<20mA
Ambient temperature:	-25°C to 70°C
Connection type:	Terminal compartment
Core cross section:	Up to 2.5mm ²
Housing material:	PBT
Protection degree:	IP68
Cable gland thread:	M20

Every effort has been made to ensure that the information presented in this document is correct. Signal Aspects Ltd reserves the right to change any part of the specification without notice.